

PHILOSOPHY.EXE

THE TECHNO-PHILOSOPHICAL
TOOLKIT FOR MODERN MINDS



MATTHIAS MUHLERT



The Meta Layer: Integrating Knowledge Systems and Mastering Complexity

A webinar by Matthias Muhlert • September 2, 2025

Philosophy.exe

"The Meta Layer: Integrating Knowledge Systems and Mastering Complexity"

ClearSight AI is preparing to launch a promising new recommendation engine. Performance metrics are strong, investor support is firm, and the market opportunity is ripe.

But beneath the surface, multiple frameworks collide—technical success, ethical concern, regulatory caution, and cultural tension. The situation is not just complex; it's multidimensional.

This is where the Meta-Layer begins—not as a theory, but as a necessity.

Key Ideas:

The Challenge

Competing priorities in complex systems

The Solution

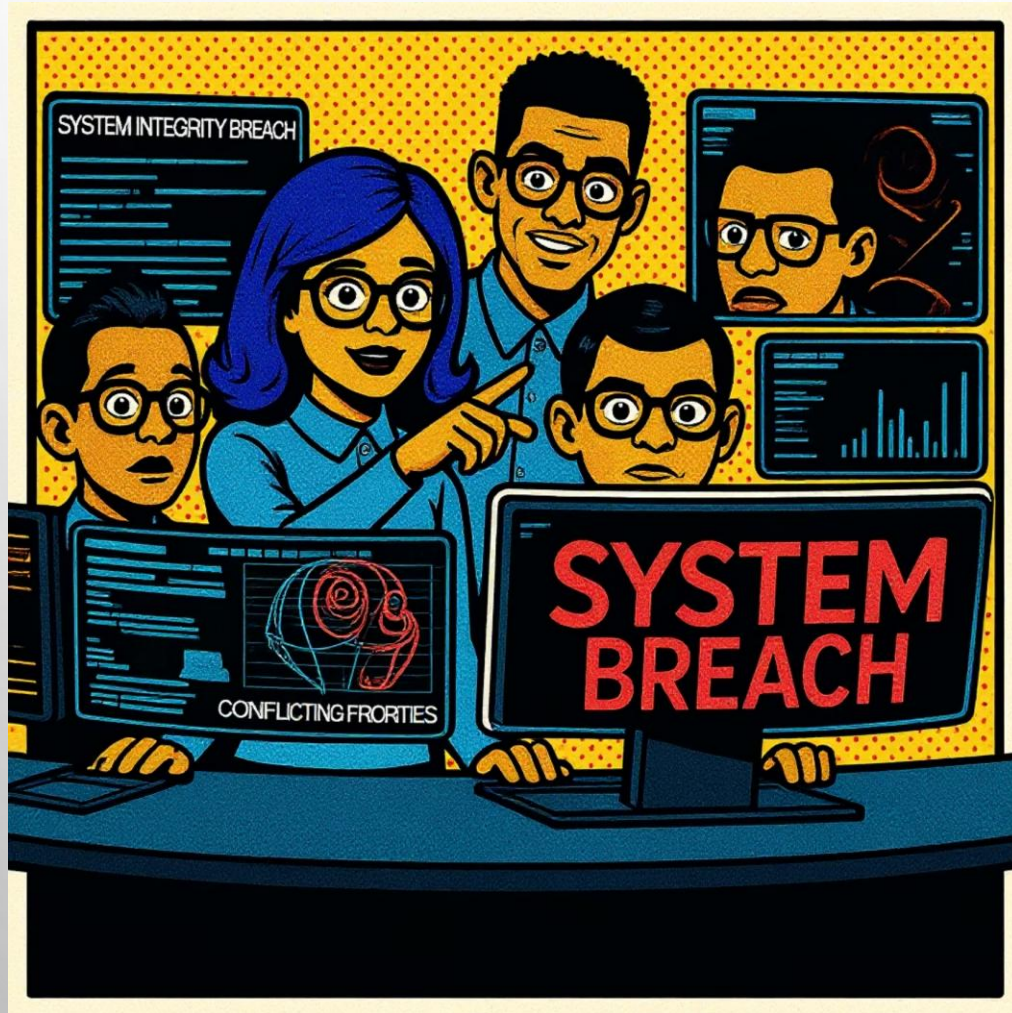
A meta-level integration framework

The Outcome

Turning chaos into competitive advantage

The AI Ethics Dilemma – A Microcosm of Complexity

"Every choice seems to come with a price."



ClearSight's engineers warn: Privacy safeguards could slash that 18% engagement boost to 10%. Meanwhile, fairness audits reveal bias against non-English speakers—delaying launch by 6 months. Investors demand speed, but internal surveys show 40% of engineers fear reputational damage.

Every fix extracts a price: Drop privacy safeguards? Risk GDPR fines. Rush fairness audits? Face *The Verge* headlines. Delay launch? Lose \$2.3M/quarter in revenue.

The team is no longer managing a project—they're navigating a multidimensional dilemma.

Why Single Frameworks Fail

"It's like trying to solve a Rubik's Cube while only looking at one face."

Modern challenges such as AI deployment demonstrate the limits of single-framework thinking:

Ethical frameworks

Offer abstract principles but lack methods for handling real-world trade-offs.

Technical guidelines

Focus on efficiency and performance but ignore human concerns.

Business strategies

Push for speed and profitability, potentially neglecting ethics and long-term trust.

Each team operates rationally—but within isolated frameworks. The result? No shared map. Decisions stall or backfire. The organization fragments—not from malice, but from misalignment.



The Meta-Layer Solution – Integrating the Irreconcilable

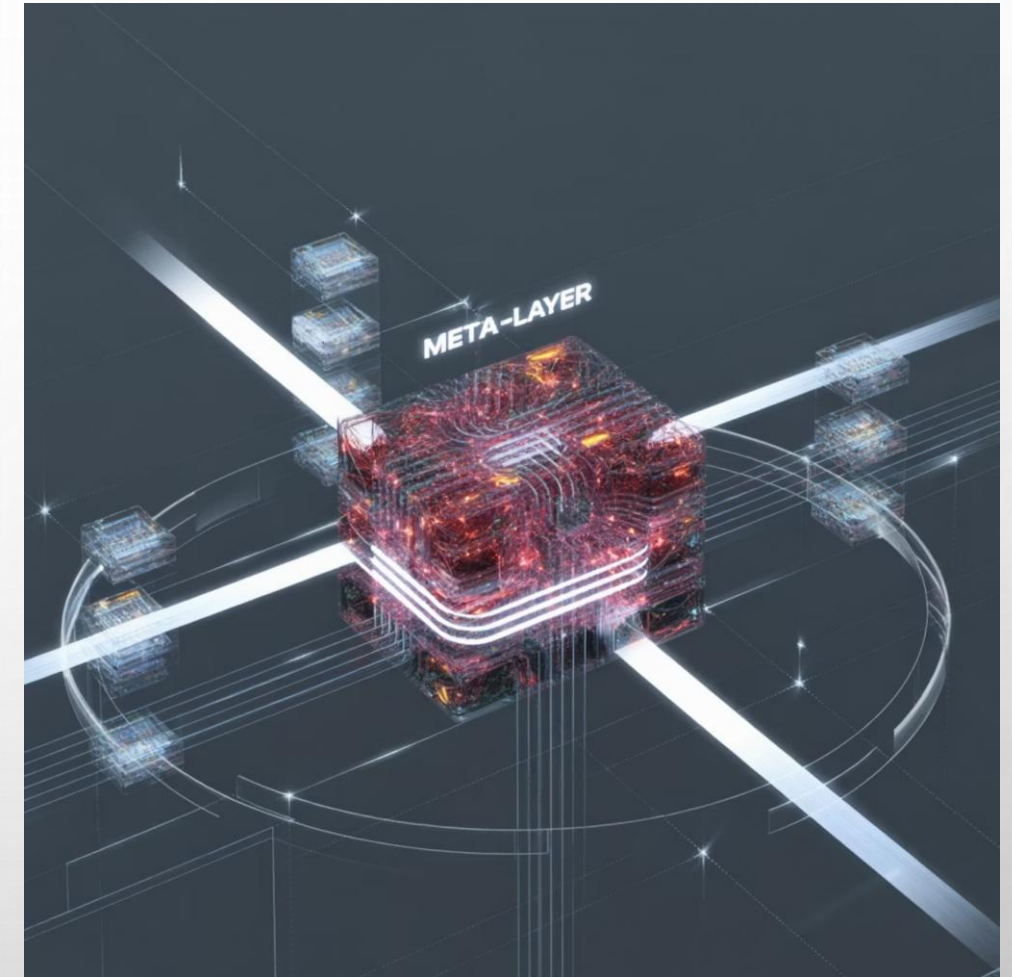
"Integration is not just a survival skill—it's a competitive advantage."

What if ClearSight could:

- **See every stakeholder's concern and every framework's friction?**
- **Make trade-offs without tunnel vision?**
- **Turn tensions into touchpoints for innovation?**

That's the promise of the Meta-Layer: not a new doctrine, but a panoramic lens. It invites multiple truths into one room—and helps them talk.

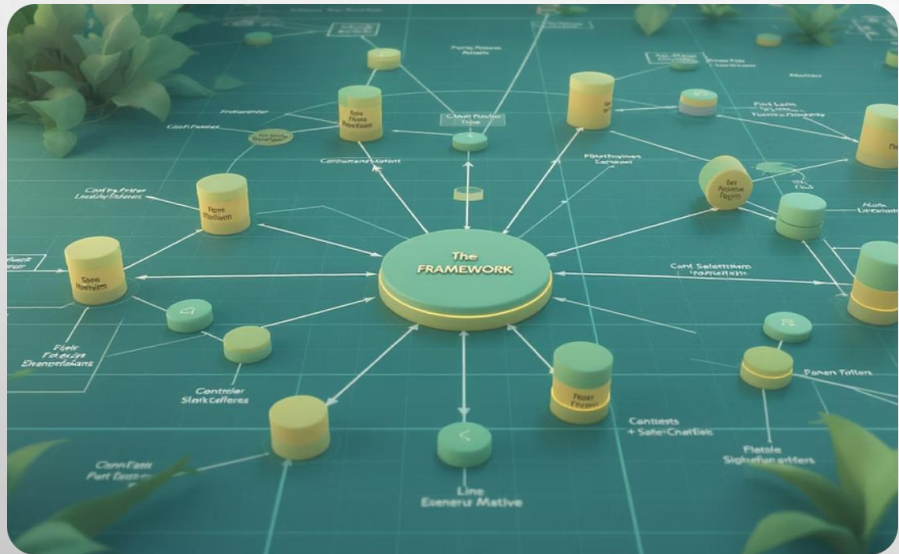
It synthesizes insights across disciplines, navigates contradictions, and prioritizes clarity in complexity.



Toolkit Overview – Navigating Complexity with Structure

"These tools don't just help you manage complexity—they empower you to thrive within it."

The Meta-Layer Toolkit includes:



Integration Canvas

A map for complexity that visualizes how frameworks, stakeholders, and impacts intersect.



Contradiction Navigator

A conflict resolution powerhouse to untangle trade-offs and enable synthesis.

The table is titled 'DATA MATRIX' and is used for prioritizing decisions based on complexity and frequency. The vertical axis represents 'Complexity' (increasing upwards) and the horizontal axis represents 'Frequency' (increasing to the right). The rows list various projects, and the cells contain 'X' marks indicating their position on the matrix.

	Frequency	Complexity	
Complexity	Set rin	M	X
Frequency	M	L	X
Complexity	X	P	X
Complexity	A	L	X
Frequency	X	M	X

Projects listed on the right side of the matrix:

- Smart Decision Making
- Prointaten Fight
- Scillect Presict
- Covecr Priirt
- Uerency Tener
- Gradinhex Pollet
- Heltinbrahy Teller
- Halming Hakrey
- Headberity Teller

Adaptive Integration Matrix

A triage model that helps prioritize decisions by urgency and complexity.

Used together, they move organizations from analysis paralysis to empowered action.

Tool 1 – Integration Canvas: Seeing the Whole System

"The Integration Canvas becomes your decision dashboard."

At ClearSight, the Integration Canvas helps visualize key aspects:



Frameworks

GDPR, AI fairness, business KPIs



Stakeholders

Regulators, users, engineers, legal



Tensions

Speed vs. caution, openness vs. control

Then came the breakthrough: a simple UI toggle that lets users opt in to more personalized AI. It satisfied regulators, built trust, and cost just 2 dev days.

The room fell silent. Then the product manager whispered: "We've had that toggle on the backlog for months. We just never saw it as a solution for *both* privacy and trust."

The Canvas turned invisible into inevitable.



Tool 2 – Contradiction Navigator: From Dilemmas to Hybrid Wins

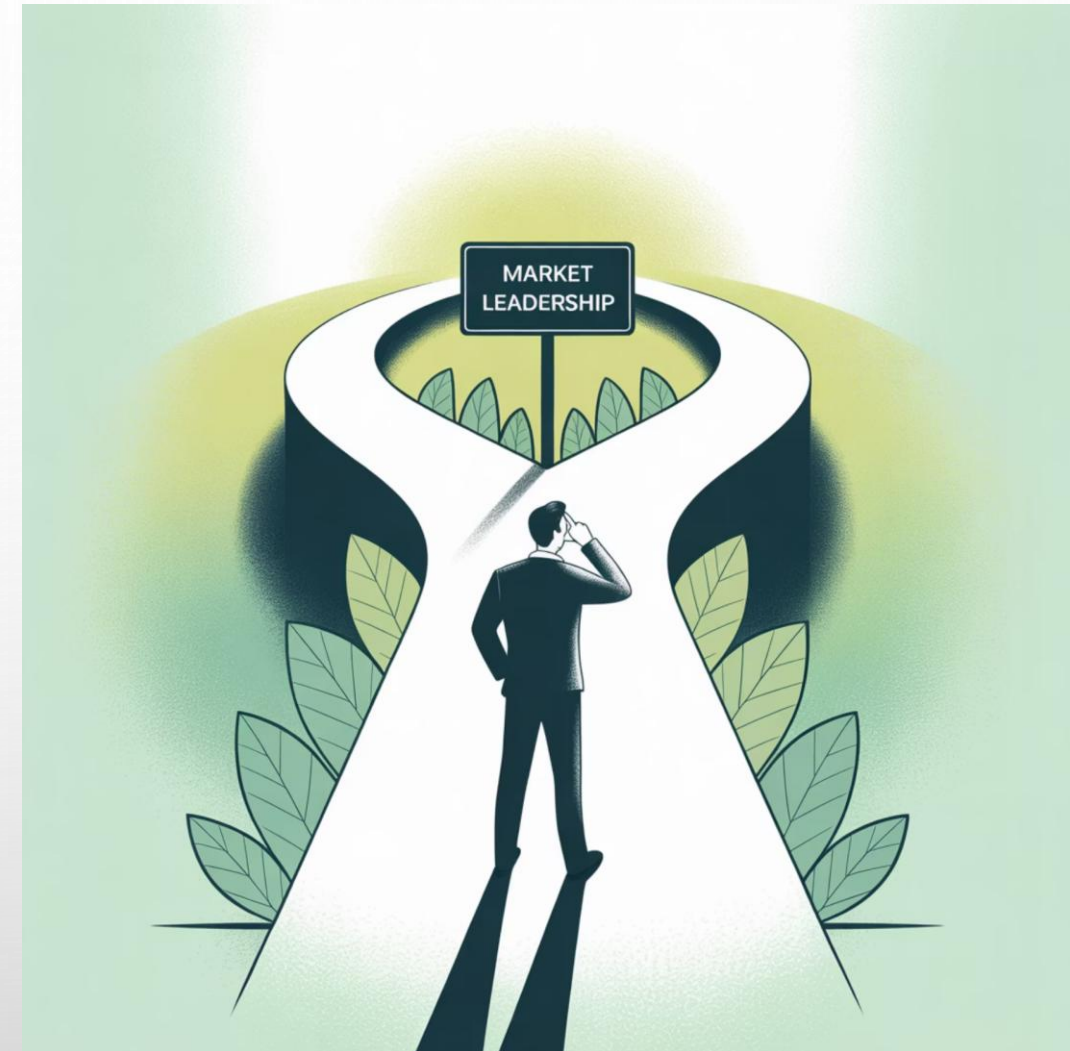
"This tool turns 'either/or' dilemmas into strategic opportunities."

The fairness audit delays launch. Should they halt entirely or rush ahead?

The Navigator forces clarity:

- **Delay = lose market lead**
- **Rush = risk reputational damage**

So, they build a hybrid: launch with a fairness baseline and a public improvement roadmap.



Tool 3 – Adaptive Integration Matrix: Prioritize with Precision

"This framework ensures you act decisively without sacrificing long-term objectives."

The team faces a wall of tasks. The Matrix helps them sort:

High Urgency, Low Complexity

Add a consent button

High Urgency, High Complexity

Resolve fairness disputes before launch

Low Urgency, High Complexity

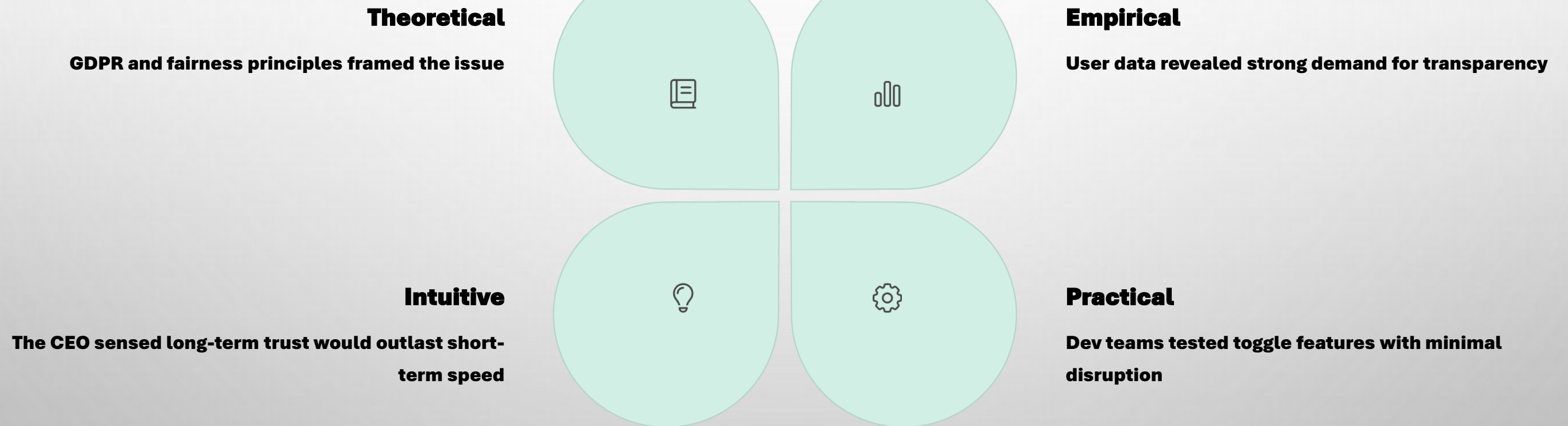
Build long-term ethics dashboards

No more blanket delays or scattershot effort. Now, timing meets depth—and anxiety gives way to traction.

Knowledge Systems – The Four Pillars of Integration

"Unified decision-making leverages each system's strengths to mitigate its weaknesses."

At ClearSight:



These systems interact through validation flows, integration points, synergy opportunities, and conflict zones. Integration didn't flatten these systems—it wove them together.

Case Study – Integration Triumph at ClearSight

"By integrating ethical foresight, technical precision, and business acumen... a meta-level framework provides a roadmap."



Before Meta-Layer:

- **Conflicts stalled decisions**
- **Teams distrusted each other**
- **Launch date in freefall**



After Meta-Layer:

- **Consent UI launched in 2 days**
- **Fairness roadmap diffused media criticism**
- **Trust scores rose by 24%**
- **Engineering turnover dropped 31%**
- **Launch met Q3 deadline with stronger brand equity**

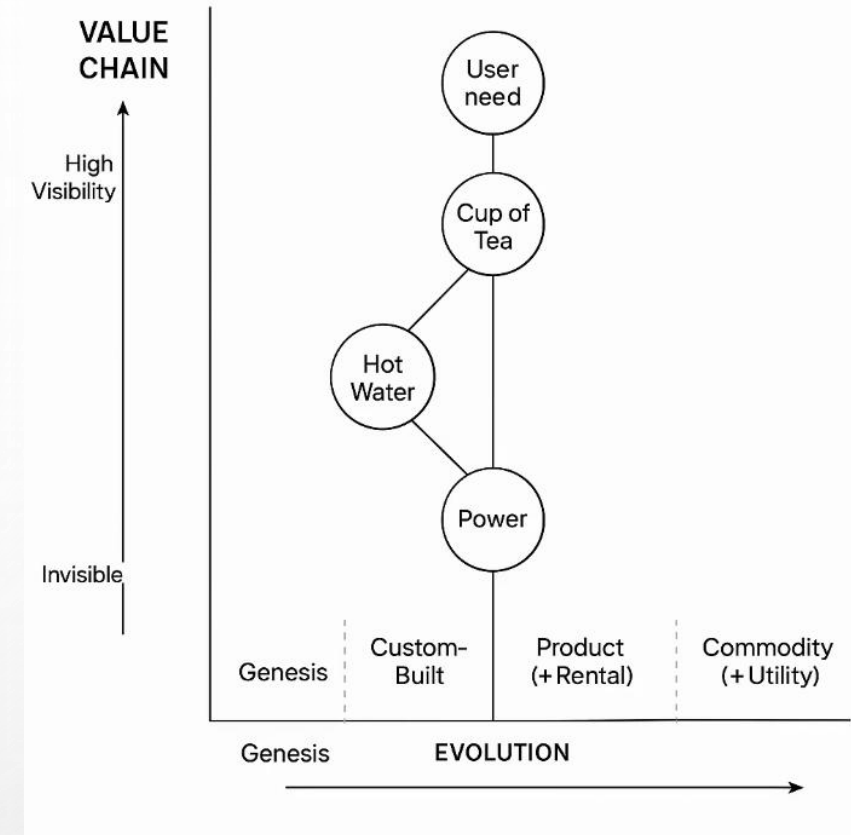
Strategic Framing with Wardley Maps

"The Meta-Layer gives you clarity in chaos. Wardley Maps show you where and when to act."

Wardley Maps help visualize how components evolve and where value flows:

ClearSight maps components of their AI system:

- **ethics compliance (genesis),**
- **personalization engine (product),**
- **and UI controls (commodity).**



Overlaying the Meta-Layer Toolkit:



Canvas

Aligns stakeholders with the component's evolutionary stage



Navigator

Resolves tensions where innovation is still volatile (e.g., fairness, transparency)



Matrix

Ensures that strategic decisions are sequenced properly along the evolutionary timeline

This transforms complexity into a dynamic choreography of clarity and timing.

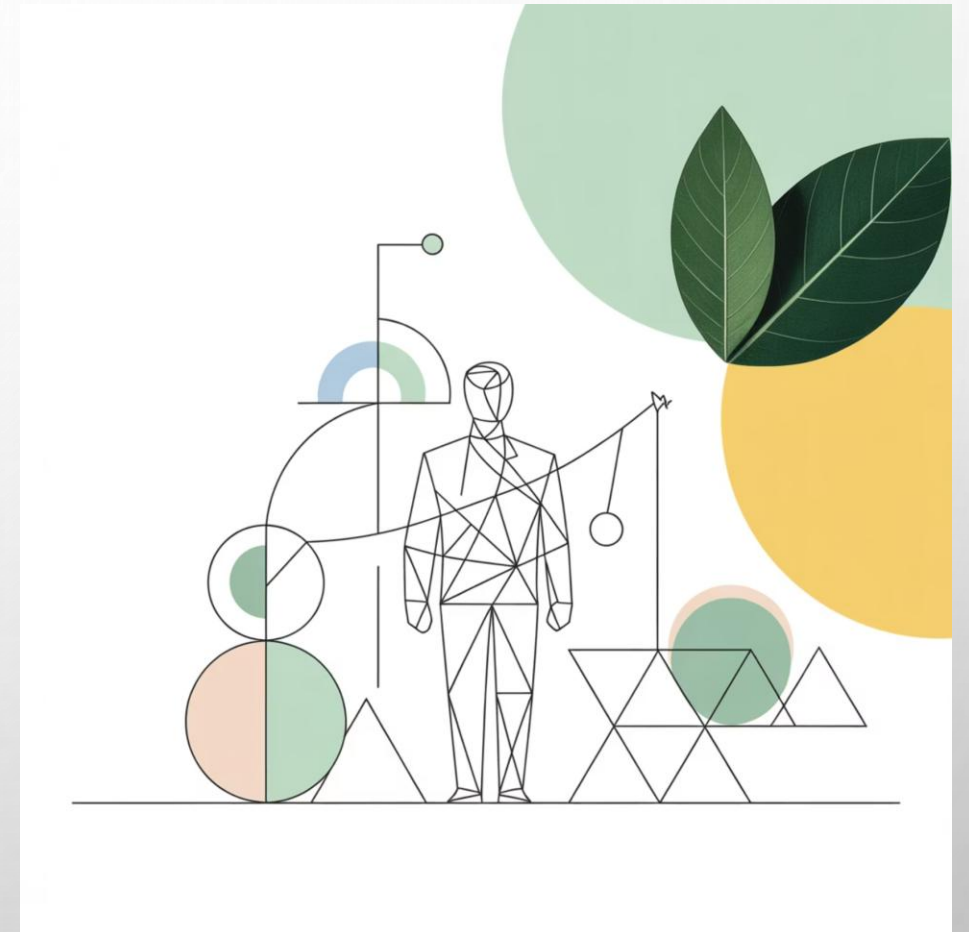
The Competitive Advantage of Integration

"Leaders who can master the art of synthesis are better equipped to deliver solutions that balance speed with substance, ethics with performance."

In a world where siloed thinking leads to public failures and lost trust:

- **Integration is no longer a soft skill—it's a strategic imperative**
- **Leaders must harmonize ethics, technology, and business**
- **The Meta-Layer becomes not just a toolkit but a mindset shift**

This isn't just risk mitigation—it's value creation through coherence.





Your Meta-Layer Toolkit – Ready for Action

"Together, we'll transform the way you approach complexity—empowering you to lead with clarity, confidence, and impact."

Three tools. One mindset:



Canvas

Reveal what's invisible



Navigator

Choose the balanced path



Matrix

Prioritize wisely

Practice them not as rituals, but as reflexes.

Call to Action – Apply the Meta-Layer

"By the end of this chapter, you'll be equipped with practical, actionable tools to bring harmony to competing priorities, turning challenges into triumphs."

Before this webinar ends:

Identify

Write down one dilemma your team is facing (e.g., "Speed vs. Safety")

Navigate

Navigate trade-offs with the Contradiction Navigator

Meta-thinking begins not with complexity—but with intention.

Map

Map stakeholders and frameworks using the Canvas

Prioritize

Prioritize action with the Adaptive Matrix

Q&A – Navigating Complexity Together

"Are we actively preventing hazards or just dodging responsibility? The real answer might hover near 42."

Bring your own dilemmas:

- **Where is your team caught between good options?**
- **Where do frameworks collide?**
- **Where are you *already* integrating—and how can you do it with more intention?**



End of Deck – Thank You!

"Complexity isn't the enemy—it's the invitation."

